

100W Rear Exit Flexi Solar Panel

Part code: STPVF100R

Ideal for flat roofs as well as surfaces with a slight curve, the PV Logic Flexi solar panels are robust, lightweight and extremely versatile.

Perfect for boat decks, camper vans, caravans and motorhomes, the 100W panel's seven layer construction and ETFE top sheet deliver strength coupled with efficient solar power generation.

To ensure long term performance in the most extreme environments, the Flexi panels are tested to ASTM B117 - ISO9227 for salt water spray over 1000 hours as well as accelerated Ultraviolet (UV) testing to ISO 4892.

A 10A charge controller should be used with this panel to protect the battery from being overcharged and to prevent reverse of current drain.

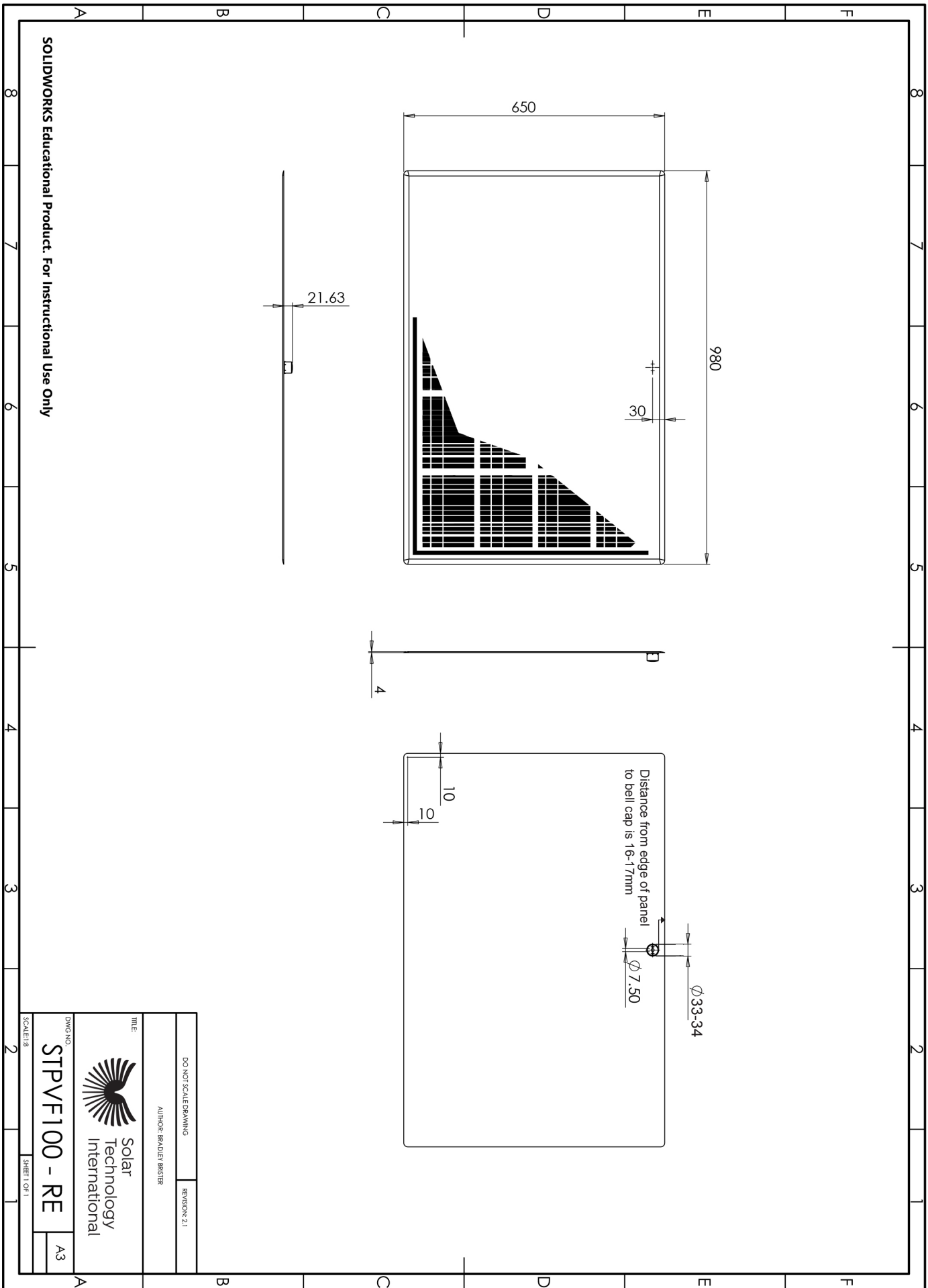
For further information from our Technical Team, please contact support@solartechonology.co.uk



SPECIFICATIONS

Size	650x980x4mm
Weight (Kg)	3.75kg
*Watts per day (W)	600W
*Amp hours per day (A)	36.84A
Charge controller	10A
Vmp (VDC) nominal voltage	17.6V
Imp (A) nominal current	5.68A
Voc (V)	21.9V
Isc (A) short circuit current	6.14A

**Watts and Amp hours/day based on six hours of average daily peak sunshine hours.*



SOLIDWORKS Educational Product. For Instructional Use Only

Distance from edge of panel
to bell cap is 16-17mm

Ø33-34

Ø7.50

10

10

4

21.63

650

980

30



Solar
Technology
International

DO NOT SCALE DRAWING

REVISION: 2.1

AUTHOR: BRADLEY BRESTER

TITLE:

DWG NO: STPVF100 - RE

A3

SCALE: 1/8

SHEET 1 OF 1